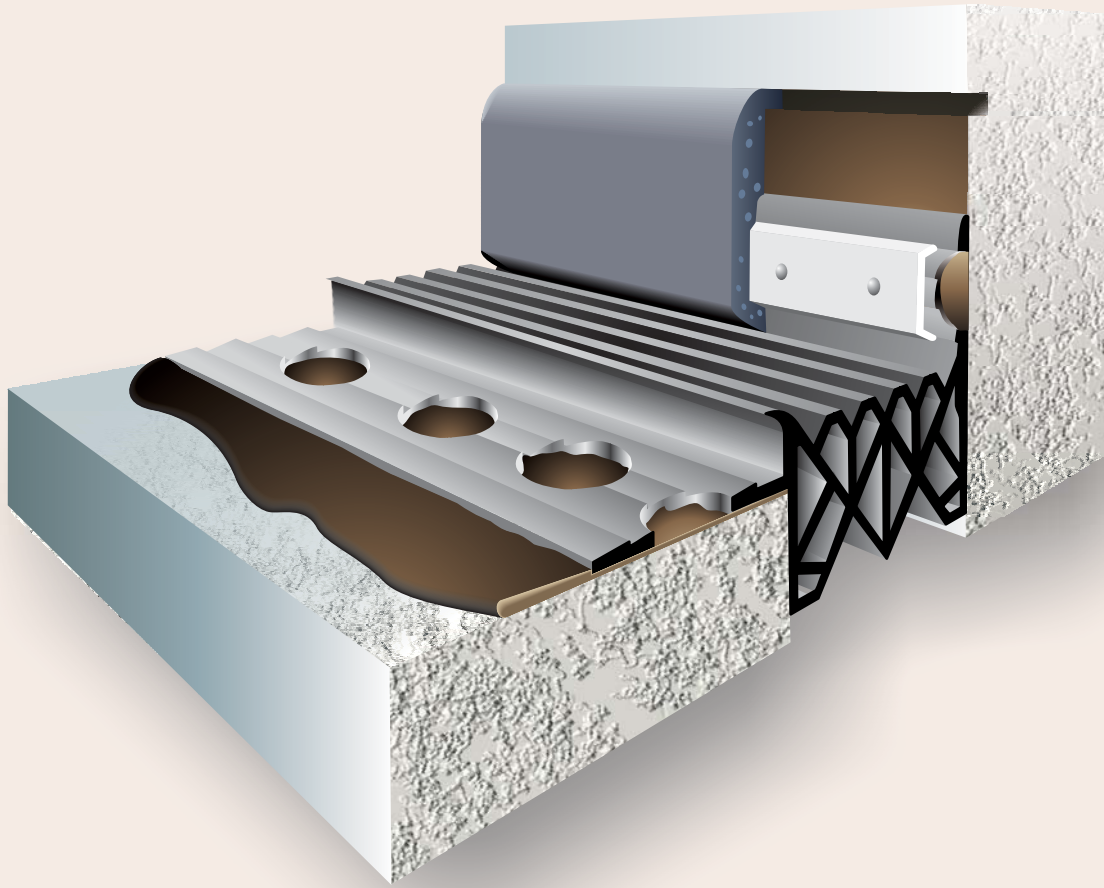


Smidcrete® C Wall Mix



Thixotropic ambient-cured polyurethane material for expansion joint systems formulated to hold the Santoprene seal in its place.

Description

Smidcrete® C Bedding is a thixotropic ambient-cured polyurethane material used in exterior and interior expansion joint systems. It is formulated as a bedding material to keep the Santoprene seal in its place while the Smidcrete® C is being applied and is curing. Its tacky and slow curing characteristics prevent the seal from lifting during the installation

process. When cured it forms an integral bond with the Smidcrete® C and creates a permanent waterproof seal with the existing concrete slab. Smidcrete® C Bedding eliminates the need to pin or anchor down the seal with any type of mechanical fasteners which can damage or weaken the concrete substrate.

Features and Benefits

- Easy to trowel on to existing concrete.
- Its thick and tacky properties make it an ideal bedding material to hold the seal of the expansion joint system in its place.
- Designed to work with Smidcrete® C.
- Formulated with an initial slow setting material that allows the Smidcrete® C to form with it an integral bond.
- When fully cured Smidcrete® C Bedding achieves the same high tensile, tear and bond strength characteristics as Smidcrete® C.

Physical Properties

Smidcrete® C Bedding consists of two components: Part A is the resin. Part B is the binder.

The physical and performance of the material are shown in Table 1.

TABLE 1 - PHYSICAL AND PERFORMANCE PROPERTIES OF SMIDCRETE® C BEDDING

| Property | ASTM Test Method | Requirements |
|---|------------------|-------------------|
| <i>For Binder Only:</i> | | |
| Solid content (%): | | 100 |
| Colour: | | black |
| Mix Ratio A/B (by volume): | | 1:2 |
| Mix Ratio A/B (by weight): | | 61:100 |
| Viscosity: | | |
| Part A | | 650 cps @21°C |
| Part B | | 1350 cps @ 21°C |
| Mix | | 900 cps @ 22°C |
| Pot Life: | | 10 minutes @ 22°C |
| Cure Time - Serviceability (to demold, traffic) | | 3-4 hours |
| Full Cure: | | 7 days @ 22°C |
| Tensile strength at break, psi (Mpa) | D638 | 1000 (6.9) |
| Elongation at break, %, min. | D638 | 150% |
| Hardness, durometer D | D2240 | 50 +/- 10 |
| Tear strength, lbs (N/mm) | D624 | 175 (30.5) |

Packaging and Storage

Smidcrete C Bedding is prepackaged in two separate premeasured pails.

1. Part A (Activator)
2. Part B (Resin)

Combine the pail containing Part A with the pail containing Part B mix thoroughly for one minute.

Mix the entire contents of each pail together. Do not divide pails in to smaller units.

Properly stored, the self life of Smidcrete® C Bedding is one year from date of manufacture.

Installation

- a) Form or saw-cut the joint opening and blockout recess into the concrete to the dimensions as recommended by the Manufacturer. The recess must be clean and dry, and level. Unsound concrete shall be removed and the area repaired. Sandblast the recess - and metal components to come into contact with mortar - to remove laitance and contaminants.
- b) Install the expansion joint system, per the Manufacturer's recommendations. Form the gap width, if required, to restrict the flow of the Smidcrete® C mortar.
- c) Using the Smidcrete® C Bedding supplied by the Manufacturer, coat the blockout recess.
 - With SM/AR shapes Bedding is placed prior to seal installation.
 - With CS shapes Bedding is placed under flaps after seal has been placed inside expansion opening.
- d) Mix and install the Smidcrete® C in the blockout recess over the expansion joint profile. Allow the material to cure, per Manufacturer's recommendations.

Mix each resin component separately using a Jiffy Mixer paddle and electric drill. No streaks should be visible. Mix the resins together with a

heavy-duty mixer for approximately 60 seconds or until the colour is uniform. Add the contents of the aggregate ingredients and mix to form the mortar. Blend the ingredients until there are no signs of uncoated aggregate. The composite material has a pot life of approximately 20 minutes.

Immediately place the mortar mix over the flaps of the expansion joint seal. Completely fill the recess. Compact the material so that no honeycombing can occur. Smidcrete® C cures exothermically requiring no application of external heat for installations at ambient temperatures of 45°F or greater.

- e) Once the Smidcrete® C is cured, complete any final installation activities for the expansion joint system used. For instance, for the SR Strip Seal product, the seal would be installed at this point.
- f) Remove the protective tape from the concrete deck. Clean up the work area and remove excess material from the site. Protect the surfaces of the exposed products until the systems have been approved by the Owner and Engineer.

Limitations

- Stem opening and block out recesses must be constructed as detailed herein.
- Mix and use only complete units.
- Part B must be mixed thoroughly prior to mixing with Part A.
- Insufficiently mixed material will not cure properly.
- Application temperature below 15°C will slow cure time.
- Smidcrete® C must be placed on sound concrete only.
- Smidcrete® C must be placed on clean and dry concrete to ensure proper bond.

Web Site: www.smid.ca
E-mail: info@smid.ca

